

Privacy in Cyber Cafes

Browse safely in a cyber cafes

Cyber cafe is a place where we can use a computer with internet access, with a payment per hour or minute.

When we are using public computers, like in cyber cafes hold several types of risks; such as :

- You don't know what programs are installed on the computers

As a result of this you may faced for some sort of a risks. For an example if malicious programs like keyloggers or spyware that can capture your keystrokes to figure out passwords(when you type your password to read web mails, logon to a site etc.) and other confidential information or monitor your browsing behavior.

- Physical security on the area

For an example if the counters/partitions which use to separate one computer form other is short the people can peep & watch what you are doing & specially they can capture your finger behavior on key board & can capture your data.

Let we discuss some important tips which you can consider when you are using a computer in public areas like cyber cafes:

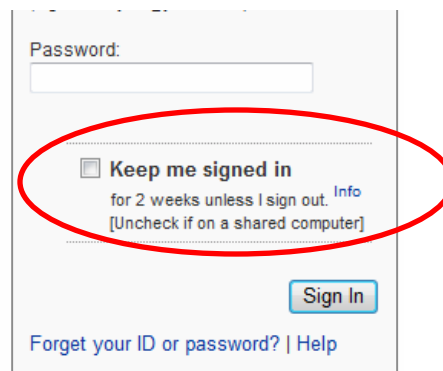
- **Log out:**

After you finishing your work always keep on mind to log out from that web site; such as if you used web mail do not simply close the mail window. You may notice "Sign Out" option is available on top right hand corner on web mail window, so use that option & logout from it.



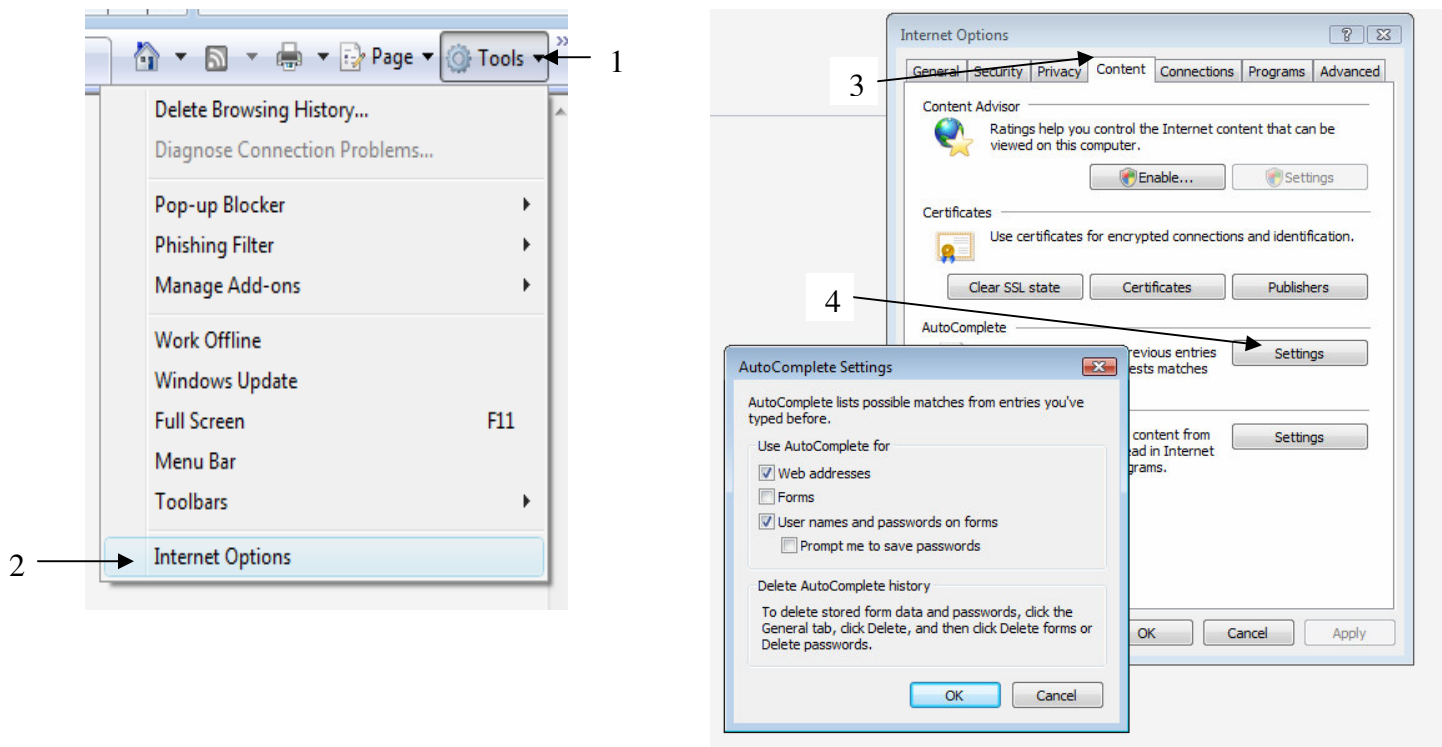
This will prevent accessing of your data by others, such as if the next person also going to use the same service when that person open the link it will automatically direct to your details site. This is common for chat sites, Internet Messenger windows & any other site which you want to use your login details & need to log on to it. So keep in mind to Log out or Sign out from these particular sites.

- **Disable automatic login:** Do not allow keeping your login details such as your user name & password on public computers. Most of the sites available this with warning message as follows:

A screenshot of a login form. It has a 'Password:' label and an input field. Below the input field is a checkbox labeled 'Keep me signed in' with the text 'for 2 weeks unless I sign out. Info' and '[Uncheck if on a shared computer]'. The checkbox is circled in red. At the bottom right is a 'Sign In' button. At the bottom left are links for 'Forget your ID or password?' and 'Help'.

If it checked make sure to uncheck by clicking on the square which allows to keep detail as shown on the picture.

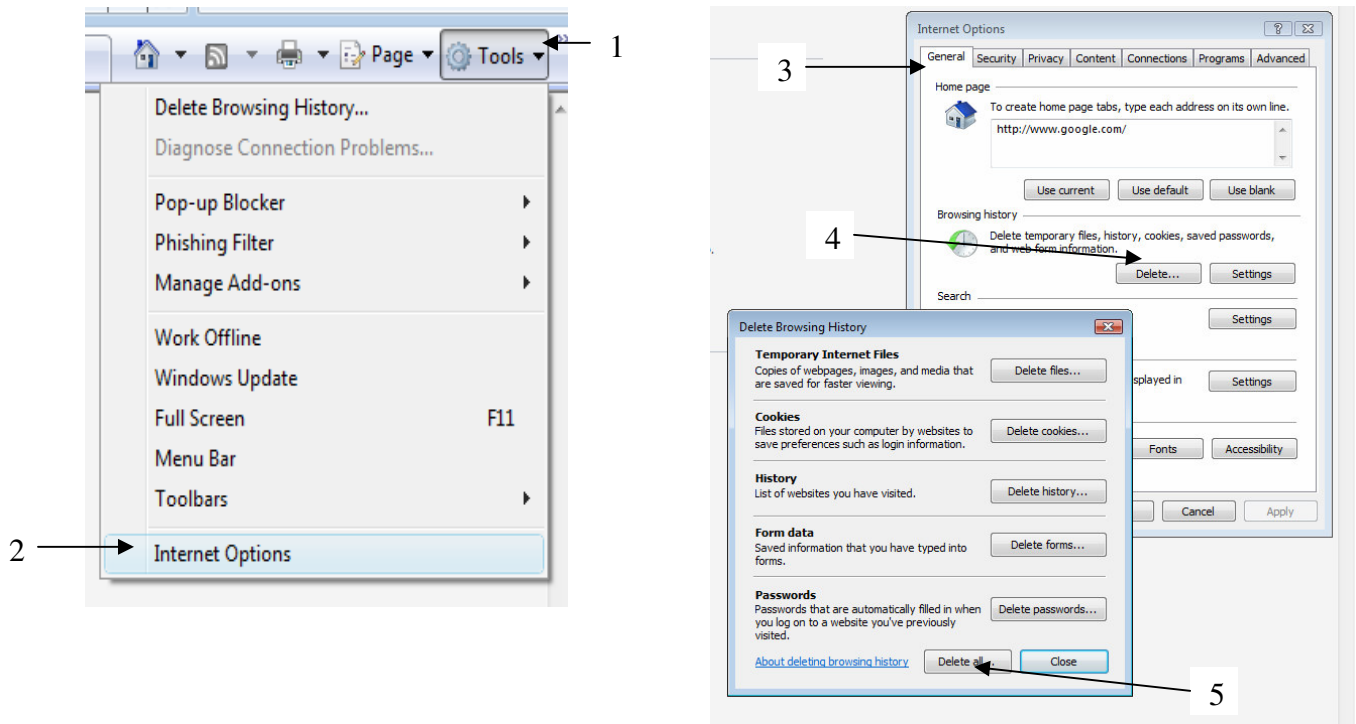
- **Do not leave the computer with your data:** If you want to attend for any other work & if you suppose to come back keep on mind to close all the opened windows before you leave the computer.
- **Clear history and temporary files before you leave:** Internet Explorer saves links that you've visited in the History folder and in Temporary Internet Files. Your passwords may also be stored in the browser if that option has been enabled on the computer that you've used.
 - Before you begin browsing you have to follow:



If the checkboxes for passwords are selected, deselect them.

Click on OK to close the windows.

- After you've finished browsing, you should clear the History and Temporary Internet Files folders. For this,



Wait for the process to finish before leaving the computer.

- **Don't do any online financial transactions by using public computer** :It is advisable to avoid online banking, shopping which you may require you to enter sensitive information like credit card or bank account details. If it is urgent and you have to do it, make sure to change your passwords as soon as you can, for this you should use a more trusted computer.

By

Nilusha Gunathilake
Information Security Engineer